



Swedish Agency
for Marine and
Water Management

A Swedish Framework for a Network of Marine Protected Areas – an inspiration towards international goals

AU-IBAR's Inception Meeting
Conserving Aquatic Biodiversity in African Blue Economy



9 December 2021

Katrin Eitrem Holmgren (Katrin.eitremholmgren@havochvatten.se)

Jenny Hertzman (Jenny.Hertzman@havochvatten.se)

Long-term focus and results

Agenda 2030

SwAM Operational Strategy

Development cooperation

- Reduce poverty through sustainable management of ocean and water
- Developing countries
- Funded via aid budget (Sida, Sweden's agency for development cooperation)
- Based on Strategy for Sweden's global development cooperation

Bilateral cooperation

- Improve environmental and climate cooperation
- Strategically important countries // Strategic and Emerging Economies
- Funded via bilateral budget
- Based on bilateral strategy of Government Offices and MoU or similar, with each country

Conventions and processes

- Strengthen Sweden's participation
- Global and regional
- Funded via SwAM
- Based on political decisions by the Government and government offices'

Copyright and Use Terms

Swedish Agency
for Marine and
Water Management

© Swedish Agency for Marine and Water Management, 2021
(version: 15.6.2021 NOT FINALISED)

This material is the property of SwAM.

If the material is used, either individual slides or components of these or the whole set, credit must be given to SwAM.

You must attribute the material to SwAM, but not in a way that suggests that they endorse you or your use of the material.

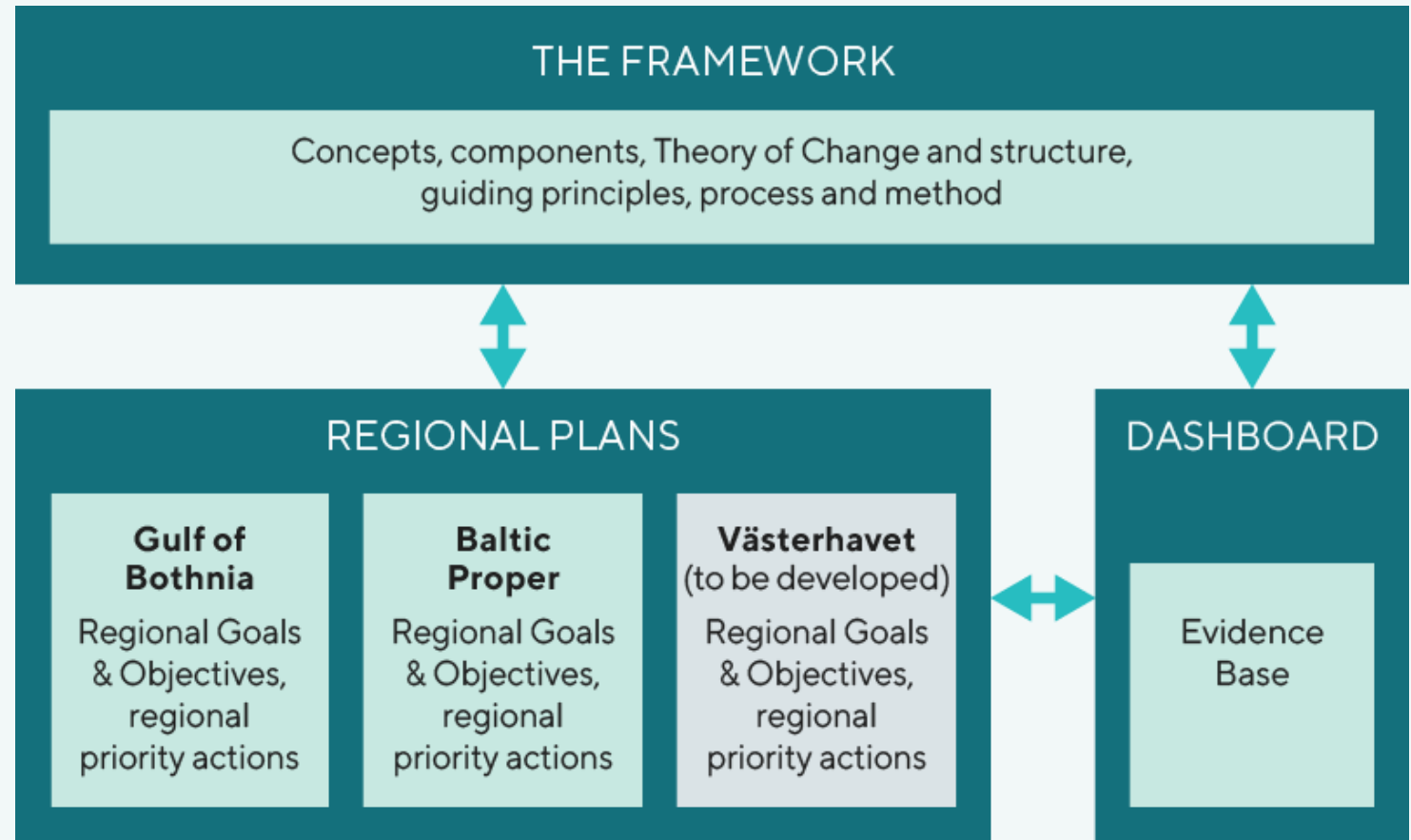
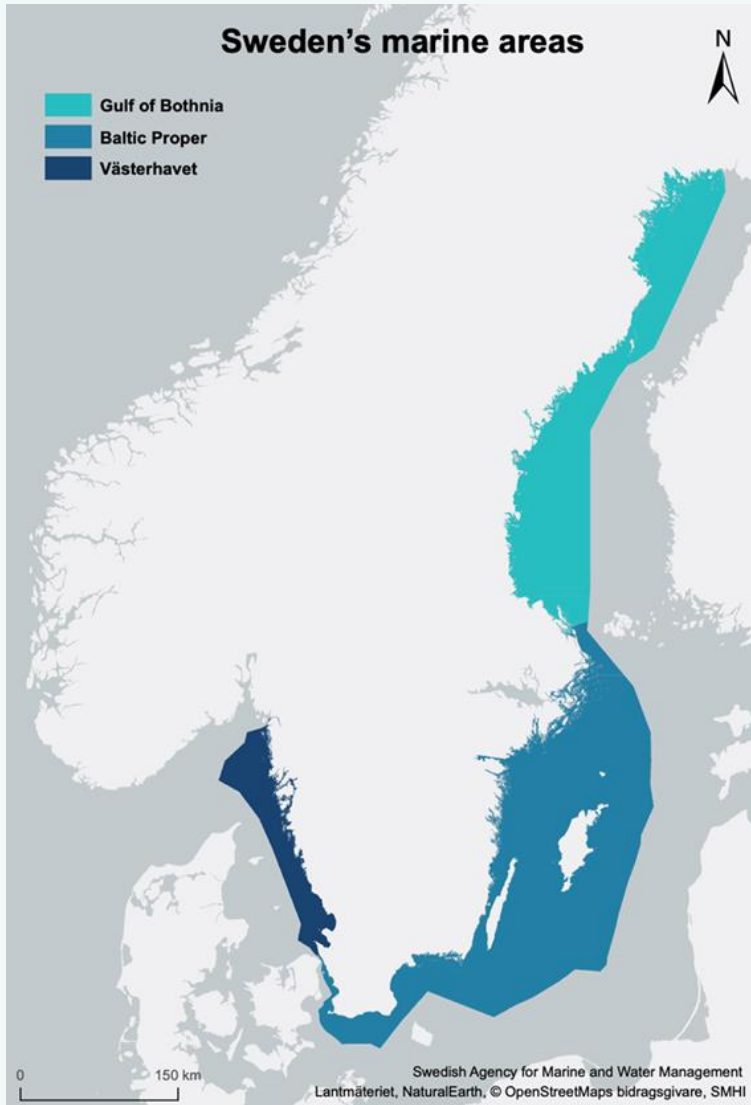
Sweden's international commitment



An **effectively managed, ecologically representative, well-connected** and **functional** network of **formally protected** marine areas, covering at least **10%** of Swedish marine waters



MPA Network Design & Management





Framework
for marine
protected areas

THE FRAMEWORK

Foundations of the framework:

Collective understanding, shared language

An **ecologically representative, well-connected** and **functional** network of **effectively managed MPAs**, covering at least **10%** of Swedish marine waters

**Definitions of key
terms / criteria**

Components

**Guiding
principles**

Understanding the key terms / criteria: **Functionality**

A **functional** MPA Network **maintains and improves the status** of ecosystems, habitats, and species that it aims to protect.

Understanding the key terms / criteria: **Functionality**

A **functional** MPA Network **maintains and improves the status** of ecosystems, habitats, and species that it aims to protect.

List of species and habitats (Targets)

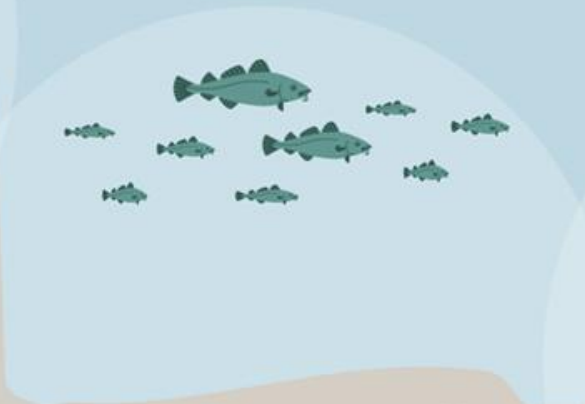
Clear descriptions of Goals (health of species and habitats)



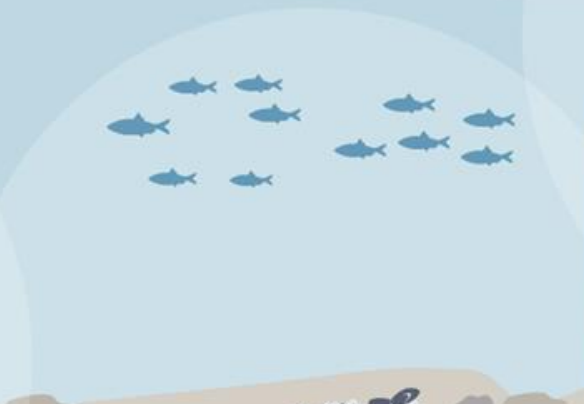
**AREAS OF PARTICULAR IMPORTANCE
FOR MARINE MAMMALS AND SEABIRDS**



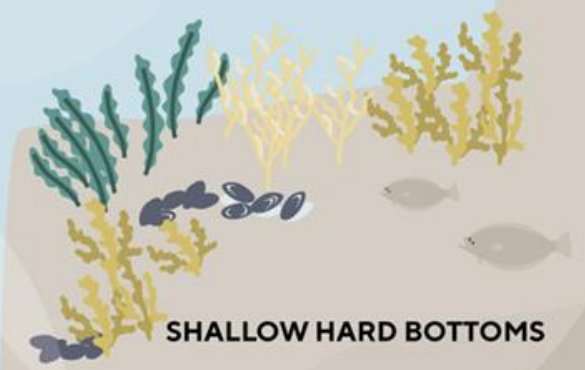
SHALLOW SOFT BOTTOMS



DEEP SOFT BOTTOMS



DEEP HARD BOTTOMS



SHALLOW HARD BOTTOMS

Understanding the key terms / criteria: **Ecological representativity**

A **representative** MPA Network encompasses **geographically well-distributed, relevant** proportions of the **full range** of ecosystems and ecosystem components that occur in a marine region.

Understanding the key terms / criteria: **Ecological representativity**

A **representative** MPA Network encompasses **geographically well-distributed, relevant** proportions of the **full range** of ecosystems and ecosystem components that occur in a marine region.

List of species and habitats (Targets)

Defined proportion of occurrence of targets that should be protected (Protection Objectives)

Understanding the key terms / criteria: **Connectivity**

A **well-connected** MPA Network is characterised by the **functioning exchange of individuals and genes** between different ecosystems and ecosystem components. The opportunity for exchange depends on the occurrence of **good quality habitats and ecosystems of relevant size**, scattered throughout the seascape.

Understanding the key terms / criteria:

Connectivity

A **well-connected** MPA Network is characterised by the **functioning exchange of individuals and genes** between different ecosystems and ecosystem components. The opportunity for exchange depends on the occurrence of **good quality habitats and ecosystems of relevant size**, scattered throughout the seascape.

Ongoing development

Protection Objectives
from network to local
(county/province) level

Understanding the key terms / criteria: **Effective management**

An MPA Network is **effectively managed** if its ecological (Nested) **Targets** are sufficiently **protected**, the **negative** effects of human activities are **reduced**, and **favourable Conservation Status** is achieved.

Understanding the key terms / criteria: **Effective management**

An MPA Network is **effectively managed** if its ecological (Nested) **Targets** are sufficiently **protected**, the **negative** effects of human activities are **reduced**, and **favourable Conservation Status** is achieved.

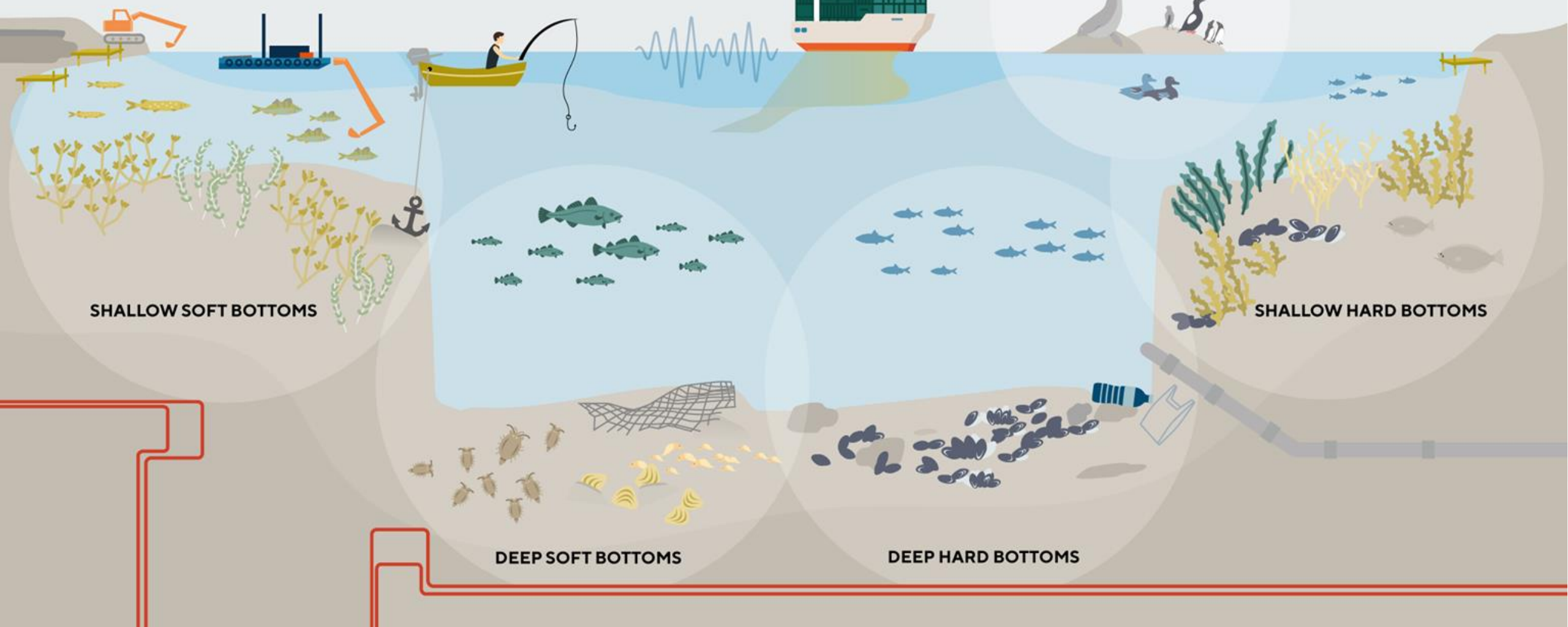
Human activities that negatively impact Targets (Threats, Stresses, Sensitivity)

How much human activities should be reduced (Threat Reduction Objectives)

How human activities should be regulated (Regulation Objectives)

6. Threats

AREAS OF PARTICULAR IMPORTANCE FOR MARINE MAMMALS AND SEABIRDS



Backbone of the Framework: **Theory of Change**

An **ecologically representative, well-connected** and **functional** network of **effectively managed MPAs**, covering at least **10%** of Swedish marine waters



Understanding the key terms / criteria: **Effective management & monitoring**

An MPA Network is **effectively managed** if its ecological (Nested) **Targets** are sufficiently **protected**, the **negative** effects of human activities are **reduced**, and **favourable Conservation Status** is achieved.

Occurrence and spread
of targets

Health status of targets

Current protection
of targets

Occurrence of threats
within MPAs

How targets are
impacted by threats
within MPAs

Current regulation within
MPAs



Framework
for marine
protected areas

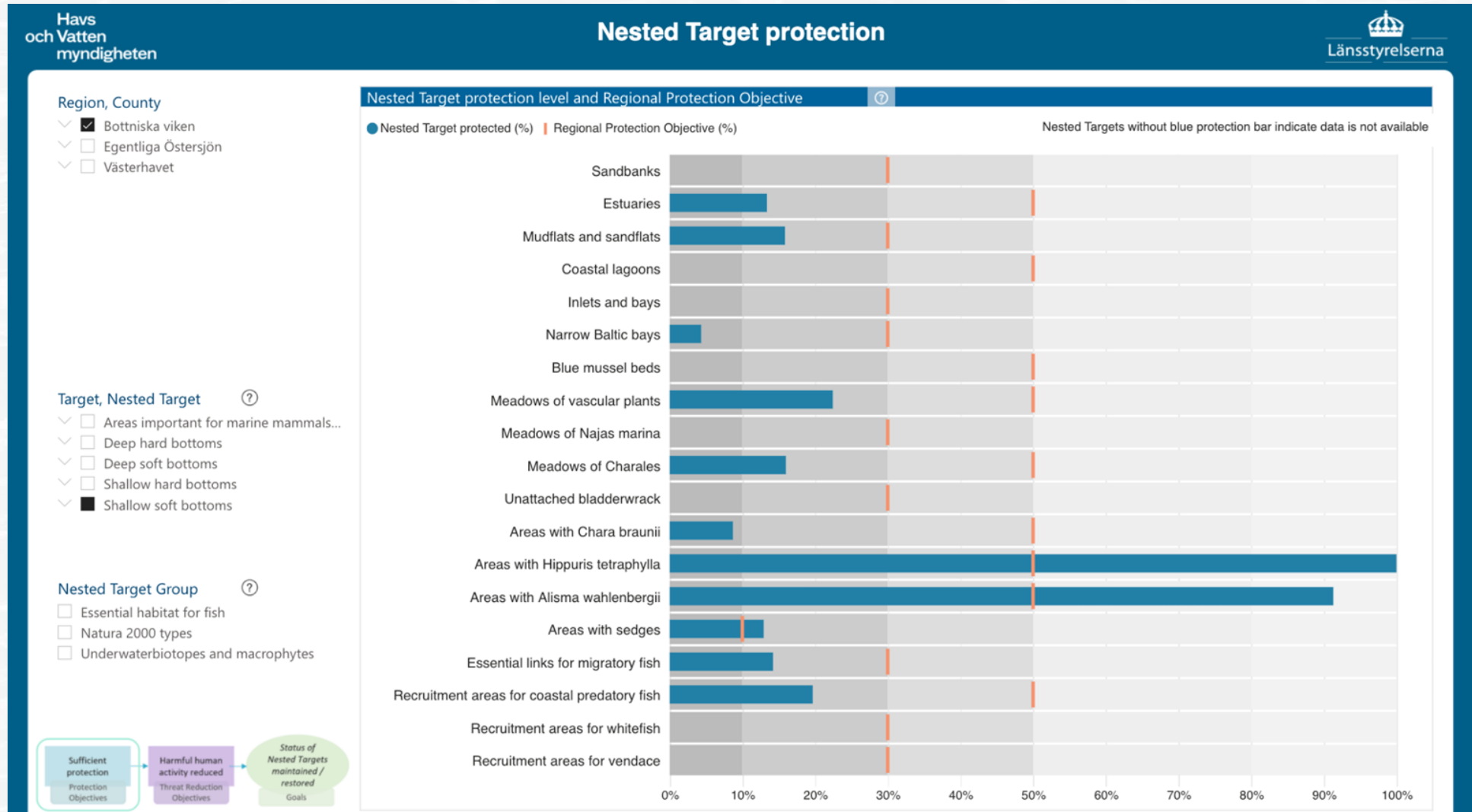
STEP-BY-STEP

Guidance for the design and management of
MPA networks

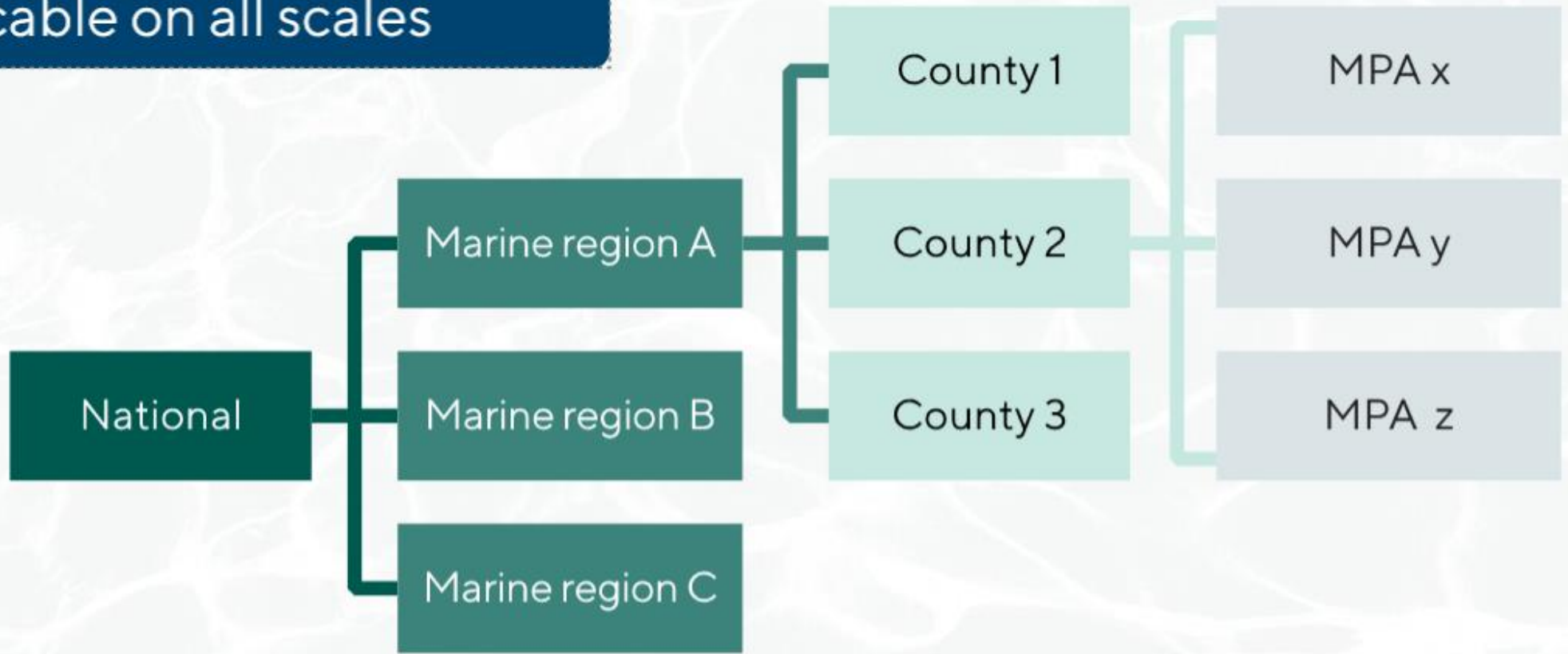
Steps in application of framework



8. Visualising the data: Dashboard



Applicable on all scales





Framework
for marine
protected areas

WORK IN PROGRESS

More information at:

www.havochvatten.se/en



Sweden
Sverige

Swedish Agency
for Marine and
Water Management

Swedish Agency for Marine and Water Management

