

HPAI Risk Situation and the Socioeconomic Impacts on the Poultry Sector: Burkina Faso, Côte d'Ivoire, Senegal

Presented by

Amadou Gueye

gueye.amadou@ism.edu.sn / amadou.gueye.sn@gmail.com



Biosafety (structural and operational): REMINDER

Sector 1: Industrial and integrated system with a high level of biosecurity

Sector 2: Commercial poultry system with a moderate to high level of biosecurity
and birds/products usually sold commercially

Sector 3: Commercial poultry system with low to minimal biosecurity and
birds/products sold at live markets

Sector 4: Village and backyard poultry production with minimal biosecurity and
birds/products consumed locally.



Poultry farms: Biosafety



Shot on OnePlus
By Dr. Amadou GUEYE



Dr Amadou GUEYE
Shot on OnePlus
By Dr. Amadou GUEYE

3



Shot on OnePlus
By Dr. Amadou GUEYE





Poultry farms: Biosafety



LBM: Biosafety & Biosecurity



LBM: Biosecurity





AFRICANA
AU
INTERAFRICAN BUREAU FOR
ANIMAL RESOURCES

« Slaughterhouses »: Biosafety & HUMAN HEALTH



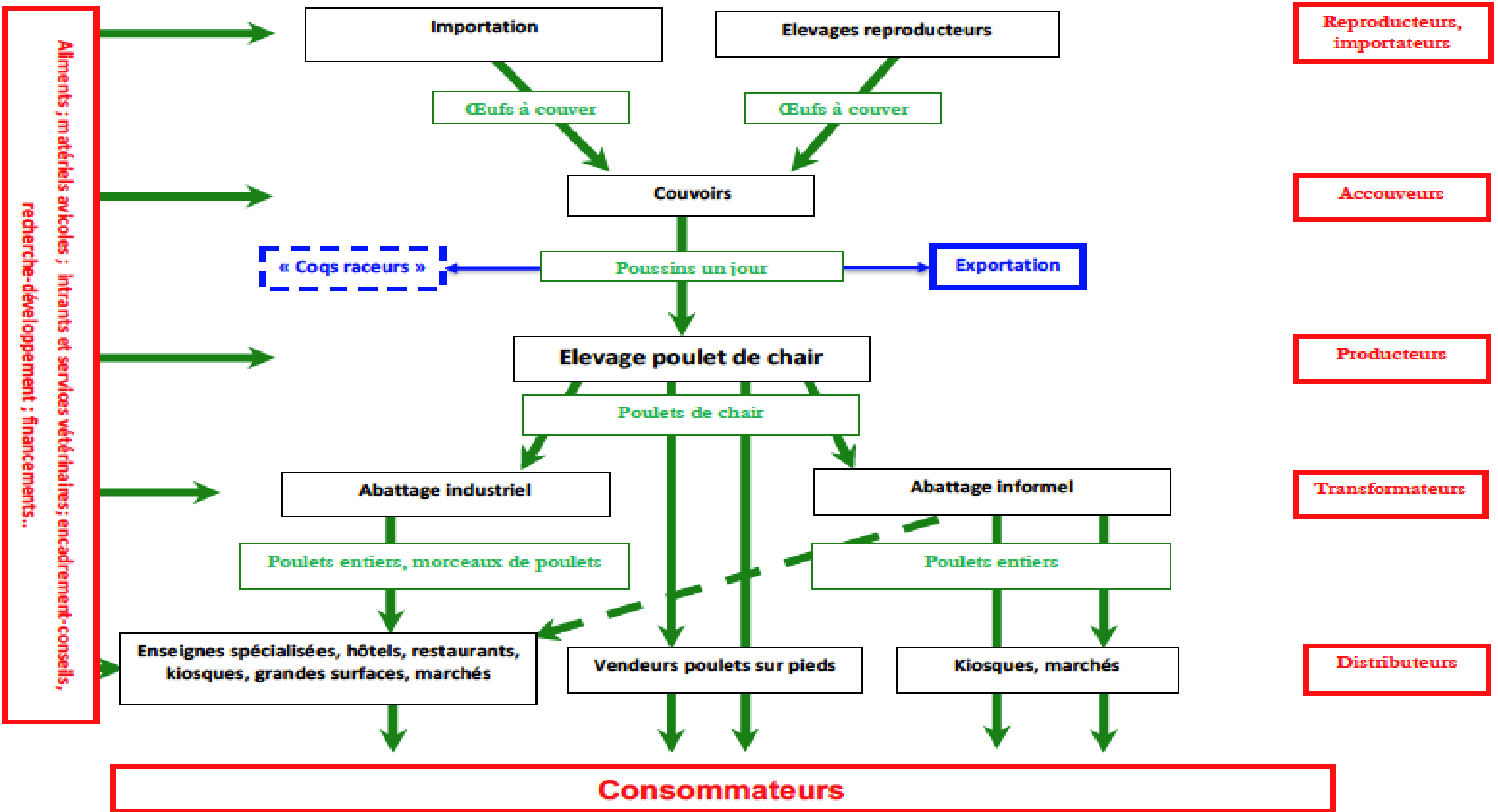
Dr Amadou GUEYE



Shot on OnePlus
By Dr Amadou GUEYE

PVC Senegal





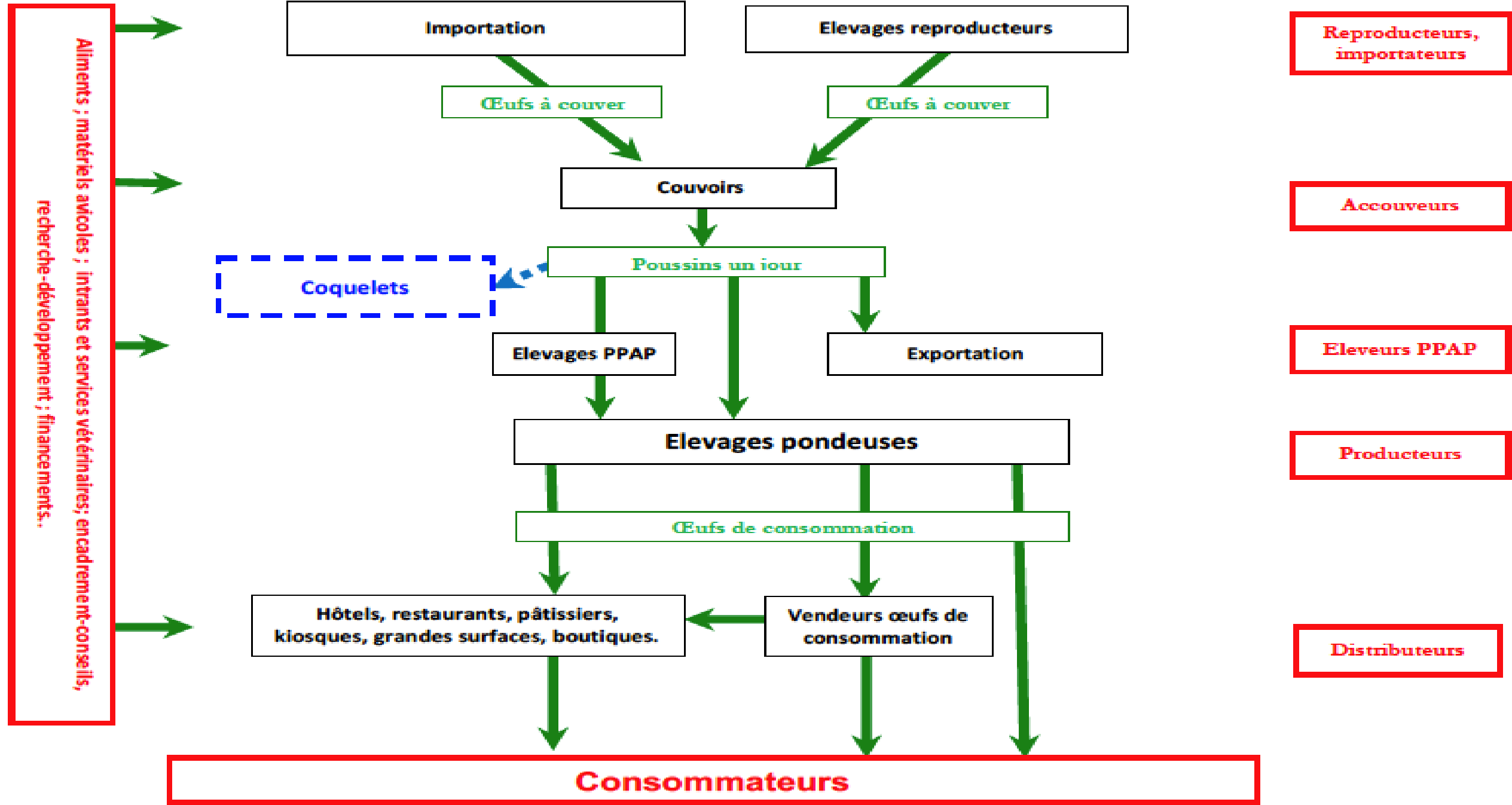


Schéma chaîne de valeur œufs de consommation: flux produits

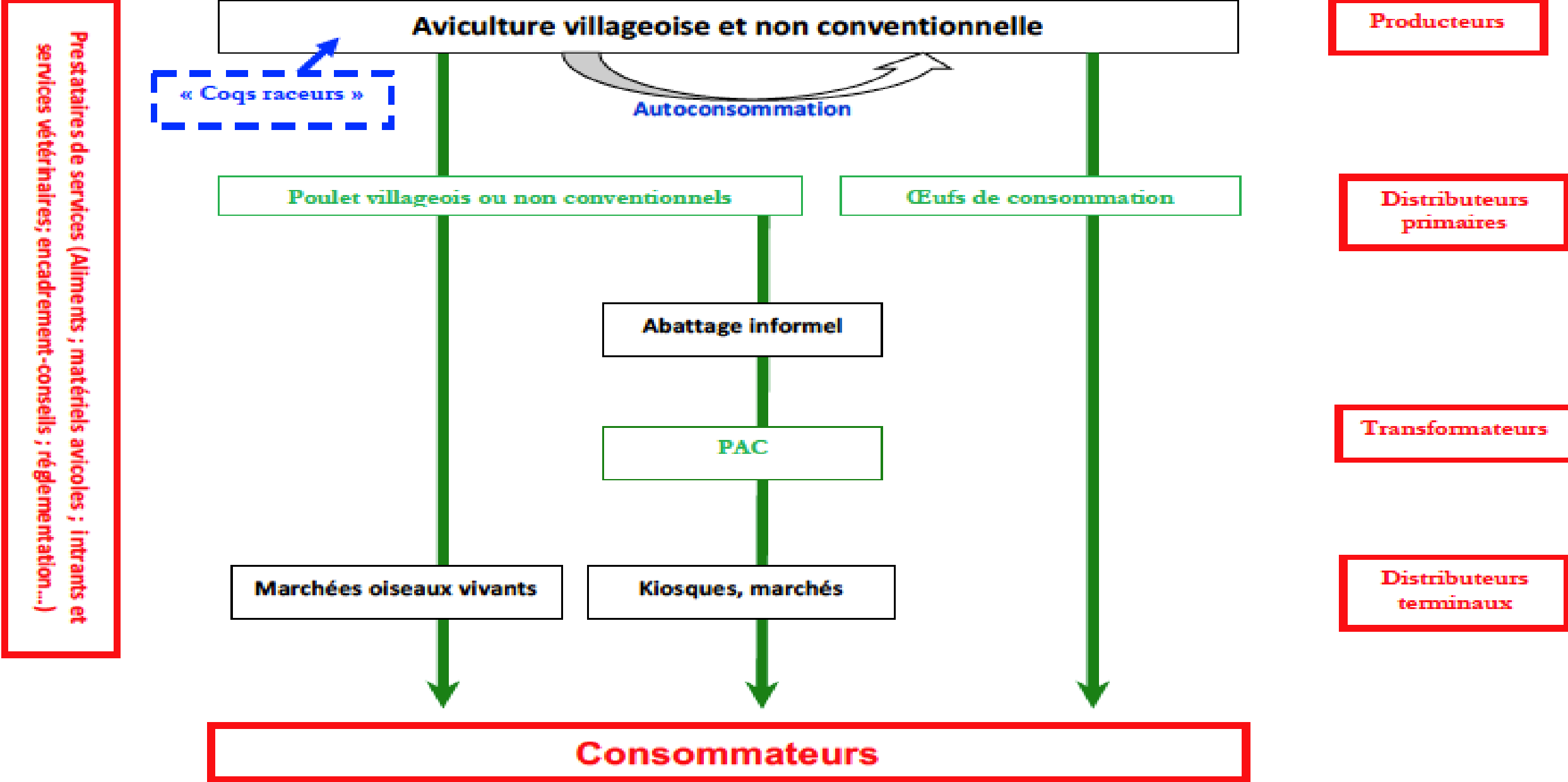


Schéma chaîne de valeur système d'aviculture villageoise et non conventionnelle
 (Flux produits : poulets sur pieds, viande, œufs)



Risk assessment: introduction of IHAP



Risk Assessment: introduction of HPAI

Neighbour countries

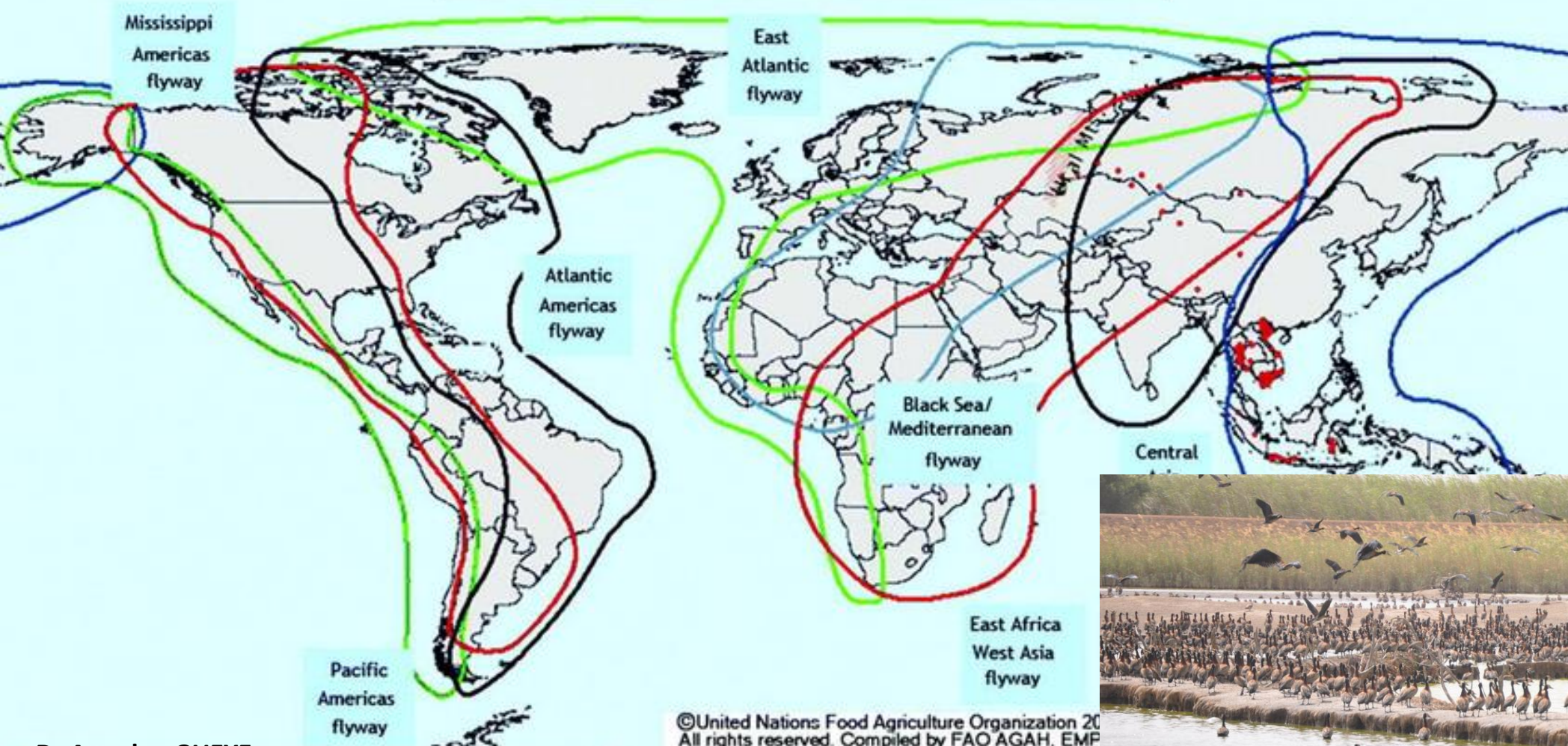
- Des **foyers IAHP (à virus H5N1)** sont régulièrement notifiés à l'OMSA par les pays de l'Afrique de l'ouest depuis 2015
- Les mouvements intenses (commerce légal ou illégal) transfrontaliers de **volailles vivantes**, de produits avicoles (viande de volailles et œufs de consommation), **d'équipements et de matériels avicole.**



Risk Assessment: introduction of HPAI

Migratory birds

Major flyways of migratory birds



Risk assessment: spread of IHAP



Risk factors_{/1}

- **Density of production units (anarchic multiplication of sector 3 poultry houses in peri-urban areas)**
- **Multiple reuse of used egg trays**
- **Circulation of used feed bags (national and cross-border)**
- **Circulation of clean and soiled litter bags (national and cross-border)**
- **Imports of certain supplies.**
- **Manure collection by dealers (national and cross-border)**
- **Manure collection by market gardeners (national and cross-border)**
- **Manure utilization by market gardeners (national and cross-border)**
- **Formal and informal movement and trade of poultry products and live poultry (national and cross-border)**
- **Structural Biosafety and biosecurity (SECTEUR 3)**



Risk factors_{/2}

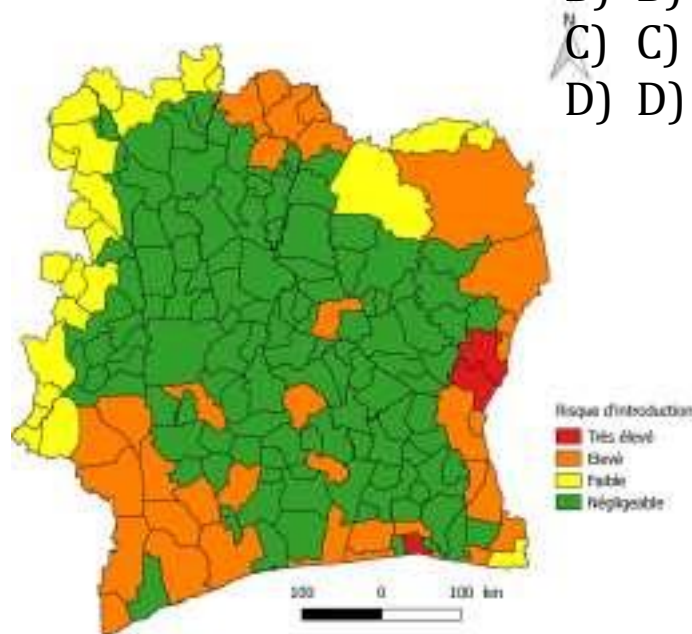
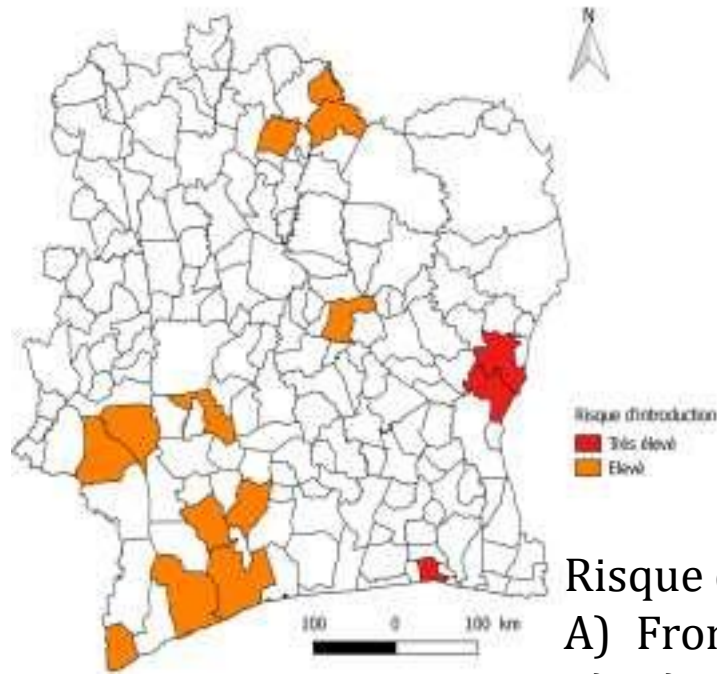
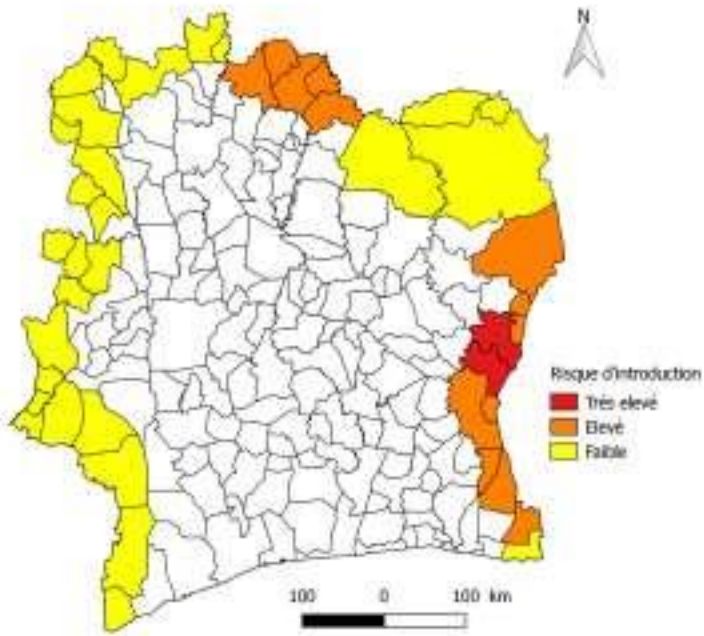
- **Operational Biosafety and biosecurity (SECTOR 2 and 3)**
- **Traditional poultry farming (SECTOR 4)**
- **Migratory birds (Migratory bird route and presence of wetlands)**
- **Live bird markets**
- **Central Veterinary Diagnostic Laboratory (Visit of the farms and sampling by the agents of the ED, geographical location of the Laboratory, waste management,**
- **Outbreak management (Quality of response)**
- **Poultry concentration (traditional and modern)**



Risk Communication

- **On the risks of introduction and spread of HPAI;**
- **On the seriousness and the impact of HPAI (Animals and Humans)**
- **On the warning signs (disease factsheet);**
- **On early warning and reporting;**
- **On good Biosafety and biosecurity practices.**

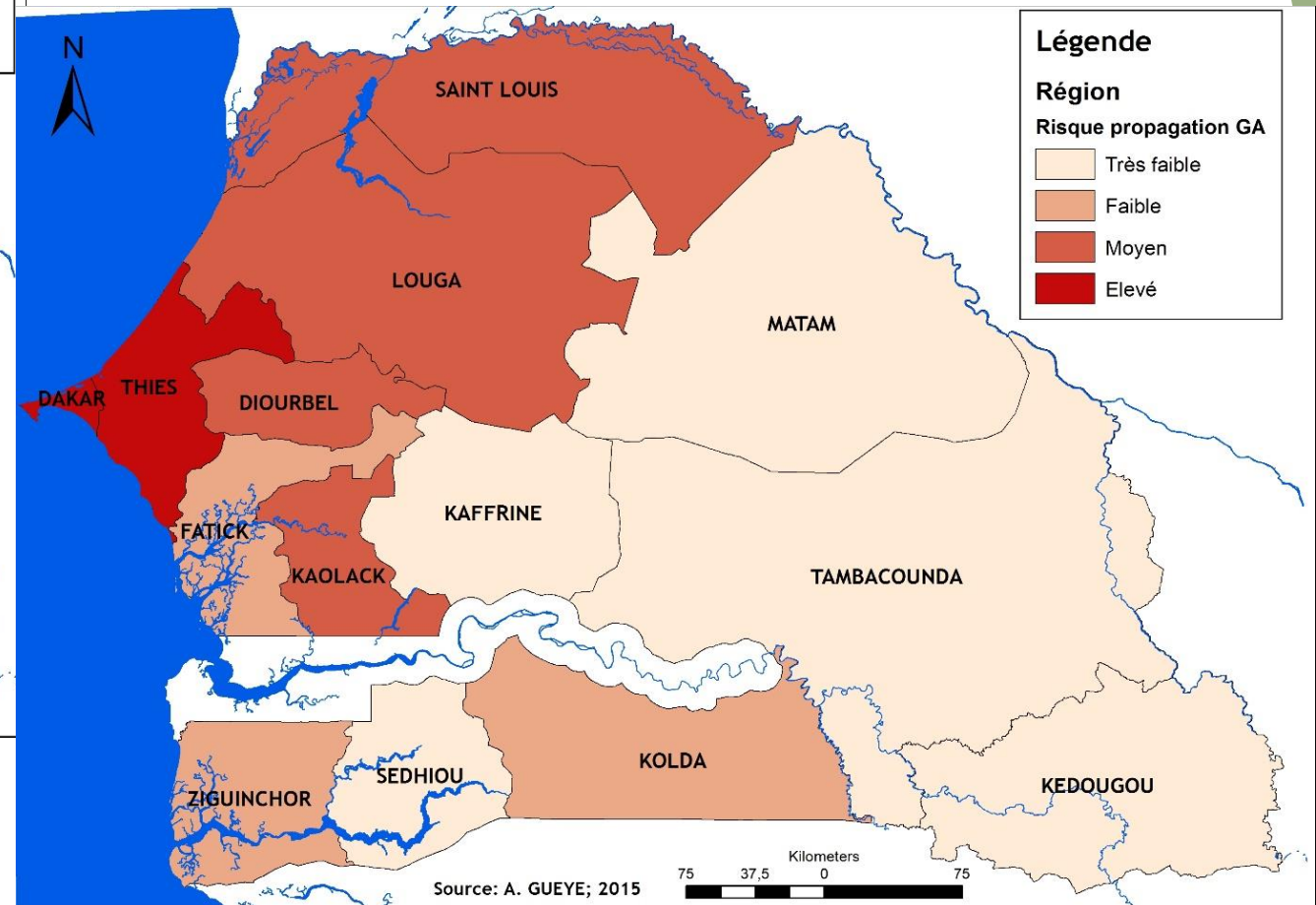
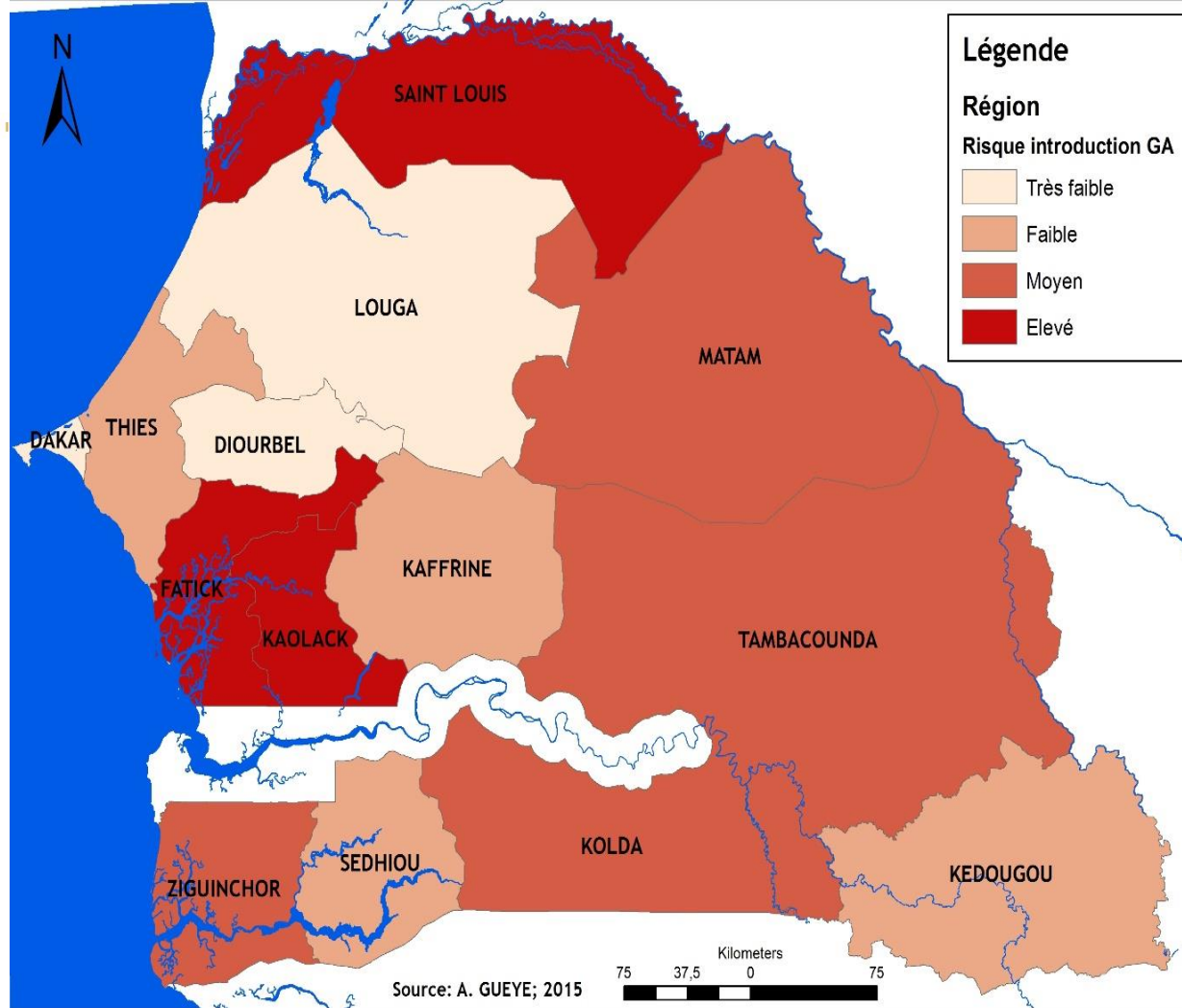




Risque d'introduction de l'IAHP en Côte d'Ivoire.

- A) Frontalières.
- B) Commerce transfrontalier.
- C) Zones de repos des oiseaux sauvages.
- D) Risque d'introduction final.





SOCIOECONOMIC IMPACT

- **Loss of production (mortality, egg drops...)**
- **International trade in HE, DOC, live birds and poultry products**
- **Public health**
- **...**

