



IGAD Center for Pastoral Areas and Livestock Development (ICPALD)

An Overview of IGAD plan on livestock development for 2025 and beyond

Dr. Ameha Sebsibe, ICPALD

Some data on Livestock in the IGAD Region



**TOTAL LIVESTOCK
POPULATION-Ruminants**

480 Million



**IGAD OCCUPIED LAND
MASS 5.2 million Km2**

40% Africa



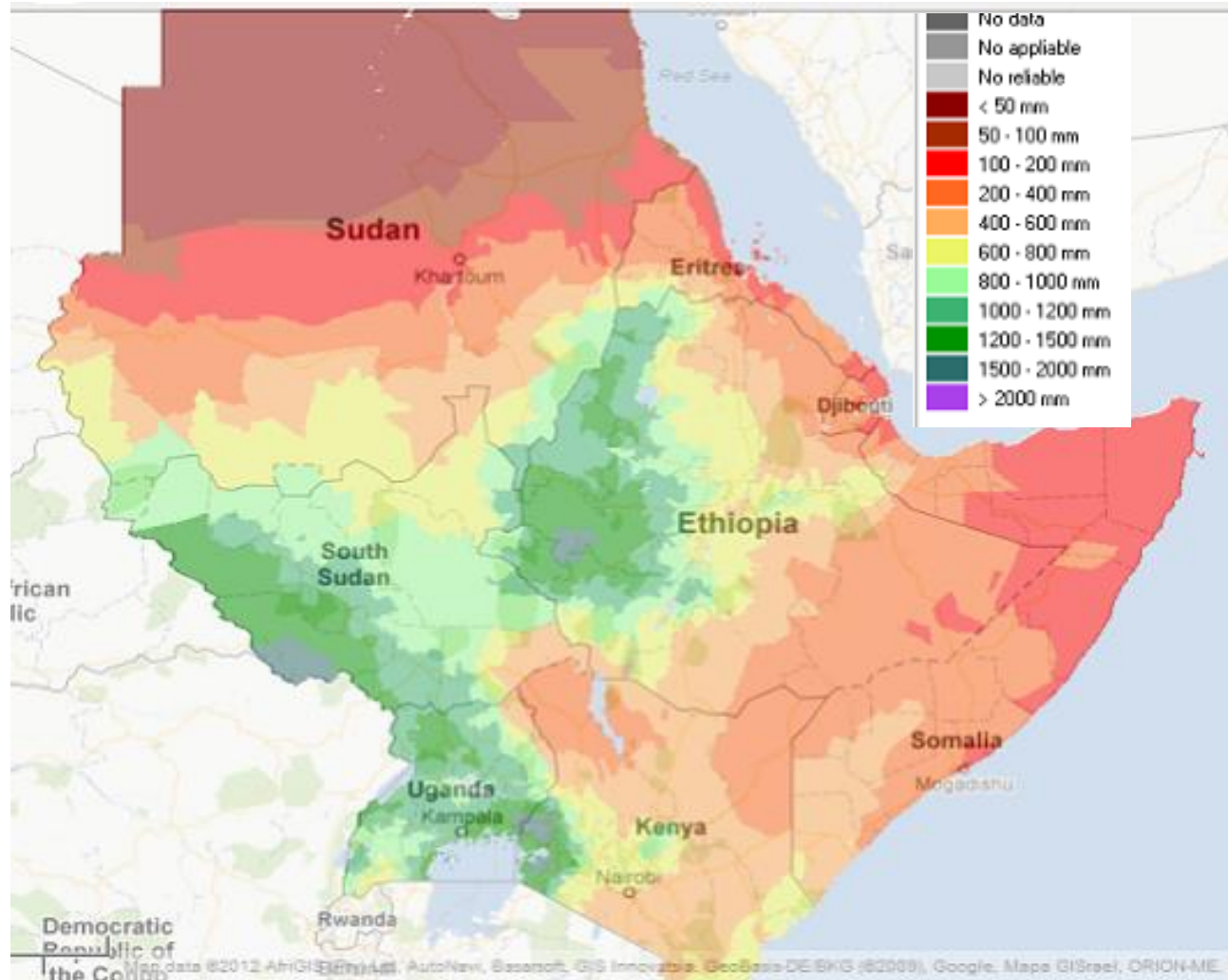
**In IGAD ASAL
OCCUPIED**

70%



**Livestock CONTRIBUTION
TO AGDP**

57%



Source: IGAD Animal Health Strategy 2017-2022 & Social and economic loss of cattle rustling (country reports)

ICPALD Departmental Thrusts

- **Mandate:** To promote and facilitate sustainable and equitable development of drylands and livestock resources in the IGAD region
- Departmental Thrusts
 - 1. Livestock Development
 - 2. Research, Policy and Gender
 - 3. Drylands Development, Climate Change and Pastoralism

Challenges to Livestock and Pastoralists

- Transboundary Animal Disease (TAD): Effect on livelihoods and trade
- Periodic Shortage of animal feed and Water (aggravated by drought and rangelands degradation)
- Production not well structured to suit marketing (**Inconsistent & inadequate supply of marketable animals**)
- Inadequate preparedness to climate shock and associated risk (Climate change, investment gap in infrastructure)
- Limited communal land governance and management

OPPORTUNITIES

- Livestock resources – over 480 million ruminants (Cattle, Sheep and Goat)
- High demand for livestock and livestock products in the countries, the Region and Africa– driven by urbanization
- High external demand: proximity to MENA/ Asia, (met only 50% live animals and 10% of meat annual demand in MENA)
- Unexploited and expansive rangeland and other natural resources – (gums, resins, spices, honey, artisanal minerals, etc.), potential for carbon sequestration, minerals
- Food security : more than 95% of the livestock production is by smallholders
- Regional strategies (SPS, PPR, AW, AfCFTA, FEED

Current Projects at ICPALD –Livestock

Project	Donor	Duration
1. Sustainable Ecosystem Management (SEM) for Pastoralism in CBA	SIDA	2023-2025
2. Regional Livestock Program (RLP)	SDC	2023-2026
3. Building Resilient Market Systems in the Cross-border Drylands of the IGAD Region (IDDRSI IL)	USAID	2025-2026
4. Free movement and Transhumance (IGAD and ILO)	EU	2024-2027
5. Building Resilience for Food and Nutrition Security in the HoA (BREFON)	AfDB	2023- 2027
6. Entrepreneurship and Innovation Development for Fragility Reduction (EIDFR)	AfDB	2024-2025
7. Cross-border Community Resilience (CBCR)	USAID	2025
8. Strengthening Pastoralist Livelihoods in the Greater Horn of Africa through Effective Anticipatory Action (PASSAGE)	IDRC	2023-2026
9. SCIDA III – Strengthening IGAD’s Capacity to Increase Resilience in the HoA	BMZ-GIZ	2023- 2024
10. Regional Program Livestock and Pastoralism Livelihoods for Climate change adaptation	EU/FAO	2024-2027



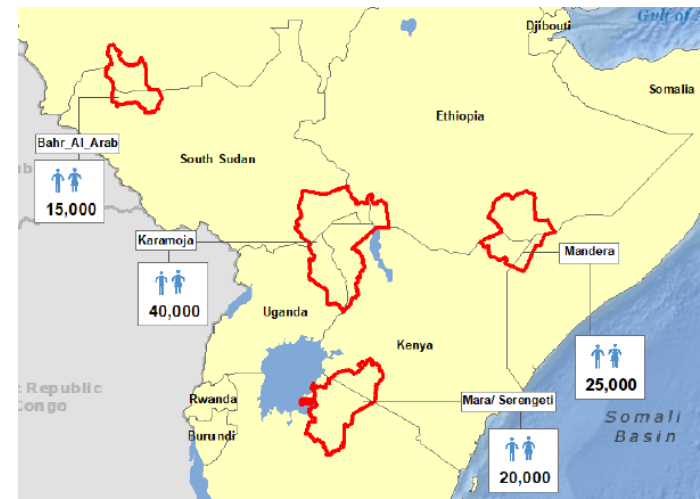
Summary of the plan in 2025 and beyond

Major intervention areas	Projects /partners involved
Cross border TADs control –operationalization of signed cross border MOUs (coordination surveillance , vaccination , quarantine, training, mapping and supporting of cross lab facilities)	RLP, EU livestock – pastoralism
Rangeland management (PRM field guide , policy harmonization and training)	RLP, SEM, EU livestock – pastoralism, SCIIDA
Stimulating employment opportunities for youth by supporting and promoting the establishment of start-ups led by young entrepreneurs.	AfDB, MS
Support to OH multi stakeholder coordination platform for Mandera cluster	RLP
Early warning and anticipatory actions	PASSAGE, RLP , SCIIDA

1. Regional Program on Livestock and Pastoralism for Climate Change Adaptation in Eastern Africa

2024-2028

- Ethiopia, Kenya, Somalia, South Sudan, Sudan, Tanzania and Uganda
 - **Outcome 1: To improve pastoral ecosystems management to be able to withstand and reverse rangeland degradation (Environmental Pillar)**
 - **Outcome 2: To create income-generating opportunities from the pastoralist value chain (economic pillar). – capacity building, PC TAD, PS investments**
 - **Outcome 3: To strengthen advocacy and policy implementation for pro-pastoral development (social pillar)**
-
- **Bahr el-Arab** (South Sudan, Sudan)
 - **Karamoja** (Ethiopia, Kenya, South Sudan, Uganda)
 - **Mandera** (Ethiopia, Kenya, Somalia)
 - **Mara-Serengeti** (Kenya, United Republic of Tanzania)



2. Regional Livestock Program

PROGRAM PERIOD –it is for 12 years, Phase I is for 4 years (2023-2026)

DONOR –SDC

PARTNERS -/implementing agencies;

- The Intergovernmental Authority on Development (IGAD), MC and Helvatus

Overall Objective:

Pastoral and agro-pastoral communities in target trade corridors have more climate resilient, inclusive, and sustainable livelihoods.

The project countries are Ethiopia, Kenya and Somalia

The project follows the trade corridors approach and operating in Four live animal trader corridors: Moyale; Tog Wajaale; Galkaayo; Afmadow; Garissa and one Camel Milk corridor-Wajir

Focus areas: Rangeland, cross border TADs control, Climate change (preparedness and response) and Trade

3. PASSAGE OVERVIEW



Project Title	PASSAGE Project: strengthening PASToral livelihoodS in the African Greater horn through Effective anticipatory action
Project period	25 th July 2023 - 31 st December 2026
Donor	IDRC – FCDO through IDRC
Partner	University of Sussex and IFRC
Project Area	IGAD Cluster 1, 2 and 3 Uganda, Kenya, Ethiopia, Somalia and South Sudan



PASSAGE OVERVIEW

Objective: Strengthening pastoral livelihoods in the African Greater Horn through effective anticipatory action, sought to address critical knowledge gaps to enhance operational early warning systems (EWS) and anticipatory action (AA) systems for drought risk in pastoralist communities.

Expected Output: To build the resilience of pastoral communities through inclusive, cross-scale risk narratives and anticipatory action plans based on predictive multi-hazard impact-based forecasts.

4. Entrepreneurship and Innovation Development for Fragility Reduction (EIDFR) Project

Project Development Objective: Strengthen institutional capacity for entrepreneurship and innovation development and job creation in Djibouti, South Sudan and Sudan through;



01

Building institutional capacities to foster Entrepreneurship and Innovation (E&I) at institutional, national, and regional levels.



02

Stimulating employment opportunities for youth by supporting and promoting the establishment of start-ups led by young entrepreneurs.

Outputs (Life of Project targets)



Renovate and equip 3 incubation Centers:



Train 1,500 stakeholders (40% women)



Establish 20 start-ups per country



Award seed fund to 20 Start-ups per country (USD 10,000 each)

4. Sustainable Ecosystem Management (SEM) Project for Pastoralism in Cross-border Areas

- **Duration:** 15th December, 2022- 14th December, 2025
- **Donor:** Sweden Government
- **Project Area:** Ethiopia (Benishangul- Gumuz Region)- Sudan (Blue Nile Region) and South Sudan (Kapoeta South County)- Uganda (Kaabong District)
- **Purpose:** to enhance the resilience of pastoralist and agro-pastoralist livelihoods through sustainable management and use of shared rangelands in cross-border areas of the IGAD region

5. SCIIDA

- The increased resilience of the communities in the Karamoja Cluster is a financial contribution from **Strengthening IGAD's Capacity to Increase Resilience in the Horn of Africa (SCIDA III)**
- Target Area: Karamoja Cluster, particularly, Karamoja sub region-Uganda, Turkana and West Pokot Counties-Kenya
- Contribution: enhance sustainable Mgt of NRs and the environment and build resilience to disasters & climate change/ variability”.
- Implementing Partners: IGAD-ICPALD, GIZ

Proposed areas of collaboration

- Evidence generation (such as on livestock contribution to GDP (IGAD did for MS some years back and need to be updated)
- Advocacy for enhanced resource allocation in MS for livestock
- Empowering of the animal owners
- Coordination at various levels

Acknowledgements



**IGAD
Member
states**



FOOD AND AGRICULTURE
ORGANIZATION
OF THE UNITED NATIONS



THE WORLD BANK



**Sweden
Sverige**